

You are invited to attend a breakfast meeting and live demonstration presented by Medtel on day 2 of Cosmetex.

# New Concepts in Fractional Resurfacing

**More than just Tattoo removal:** High Power Q-Switched Nd:YAG 1,064-nm Fractional Laser for Non-Ablative Skin Remodeling

*Presented by Dr KeeLee Tan, MD. Rejuvenate Clinic, Perth, Western Australia*

Q-switched lasers are often used for tattoo removal and other applications which demand high laser intensities in nanosecond pulses. Interestingly, the Q-switched 1064-nm neodymium:YAG (Nd:YAG) laser was the first non-ablative laser clinically tested over a decade ago. Recently, a new generation of these lasers featuring higher power and fractionated beams have been introduced for non-ablative skin remodeling and rejuvenation. Get the most out of your technologies.



Before and 3 months after 3 treatments

Before and 3 months after 3 treatments

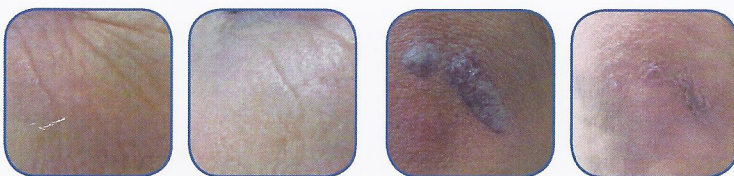
Before and 3 months after 3 treatments

*Photos courtesy of KeeLee Tan, MD. Rejuvenate Clinic, Perth, Western Australia.*

## Beyond Fractional RF: Combining Fractional RF with ultrasound acoustic energy for effective cosmeceutical delivery to the dermal layers.

The combination of these two unique technologies introduces a new method of Trans-Epidermal Delivery (TED), which delivers cosmeceutical products past the stratum corneum and the epidermis, to the dermis, for more localised, longlasting effectiveness. By integrating two unique technologies in one workstation, Alma Lasers has created a comfortable and easy to operate solution for the delivery of cosmeceutical products beneath the epidermis.

Pixel RF & Impact, combining technology and cosmeceuticals to achieve the next level of skin rejuvenation.



Before

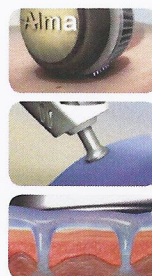
After

*Photos courtesy: Maria Claudia Issa, MD*

Before

After

*Photos courtesy: Maria Claudia Issa, MD*



### PHASE ONE:

The Pixel RF module perforates the skin, creating micro-channels.

### PHASE TWO:

The cosmeceutical product is applied to the skin.

### PHASE THREE:

The impact module generates acoustic pressure that inserts the cosmeceutical product beneath the surface of the skin through the micro-channels, achieving better results.

**MEDTEL BREAKFAST MEETING  
& LIVE DEMONSTRATION**  
**Limited Places!**

**Cosmetex Day 2, Friday 4th May, 2012**  
**7:00am - 8:15am, hot breakfast provided.**  
Hilton Cairns (3mins walk from Cosmetex)  
34 Esplanade, QLD 4870

For more information or to reserve your place, contact Dominic O'Connor on 02 9413 6208 or [marketing@medtel.com.au](mailto:marketing@medtel.com.au) or contact your local Medtel Product Specialist.

[www.medtelaesthetic.com.au](http://www.medtelaesthetic.com.au)



3rd-5th May  
Come see us  
at **STAND 41**